

# Asian Network Workshop 2021

## Waste Import and Export Control Implementation of the E-waste Control and the Plastic Waste Amendments

Environmental Protection Department  
The Government of the Hong Kong Special Administrative Region  
of the People's Republic of China

# Content

- ▷ Introduction
- ▷ Waste Import / Export Control
- ▷ E-waste Import / Export Control
- ▷ Waste Plastics Import / Export Control
- ▷ Closing Remarks



# Introduction

# Introduction

- ▷ Location
- ▷ Gateway to China
- ▷ Efficient harbour facilities
- ▷ A major transshipment port in Southeast Asian region

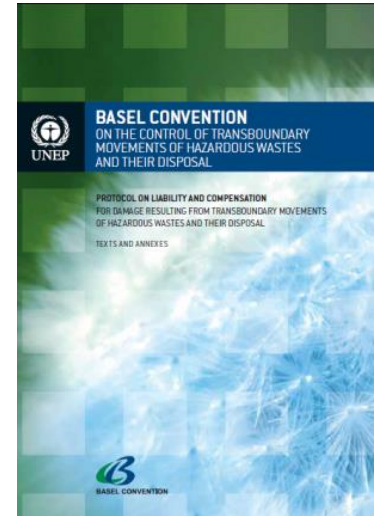


# Waste Import / Export Control



# Basel Convention

- ▶ Applies to Hong Kong through China's ratification
- ▶ Environmental Protection Department (EPD) designated as the Competent Authority (CA) for Hong Kong
- ▶ Requirements incorporated into the Waste Disposal Ordinance (WDO), Cap. 354, in Hong Kong



# Waste Import / Export Control

- ▶ **Waste** is –
  - any substance or article which is **discarded** or otherwise **dealt with as waste** shall be presumed to be waste until the contrary is proved
  - any substance or article once **given up by its original owners or users**, irrespective whether it is still functional or can be sold for a value



# Waste Import / Export Control

- ▶ Import or export of the following types of waste requires a permit
  - a type of waste specified in the 6th Schedule of the WDO, unless it is uncontaminated and is imported or exported for recycling
  - a type of waste specified in the 7th Schedule of the WDO (i.e. hazardous waste)
  - a type of waste not specified in the 6th Schedule of the WDO
  - e-waste



# Illegal Shipments Intercepted

- ▶ In 2020, EPD intercepted 89 containers of illegal waste shipments
- ▶ All intercepted shipments were returned to the original states of export

# Examples of Illegal Waste Intercepted (1)



Waste printed circuit board assemblies

# Examples of Illegal Waste Intercepted (2)



Waste monitors

# Examples of Illegal Waste Intercepted (3)



Waste laptop and desktop computers

# Examples of Illegal Waste Intercepted (4)



Waste toner cartridges

# Examples of Illegal Waste Intercepted (5)



Waste mobile phone displays

# Examples of Illegal Waste Intercepted (6)



All types of waste batteries

# Examples of Illegal Waste Intercepted (7)



Contaminated Metal Scrap  
(mixed with impurity exceeding 0.5% by weight for steel and  
1% by weight for aluminum)



# E-Waste Import / Export Control

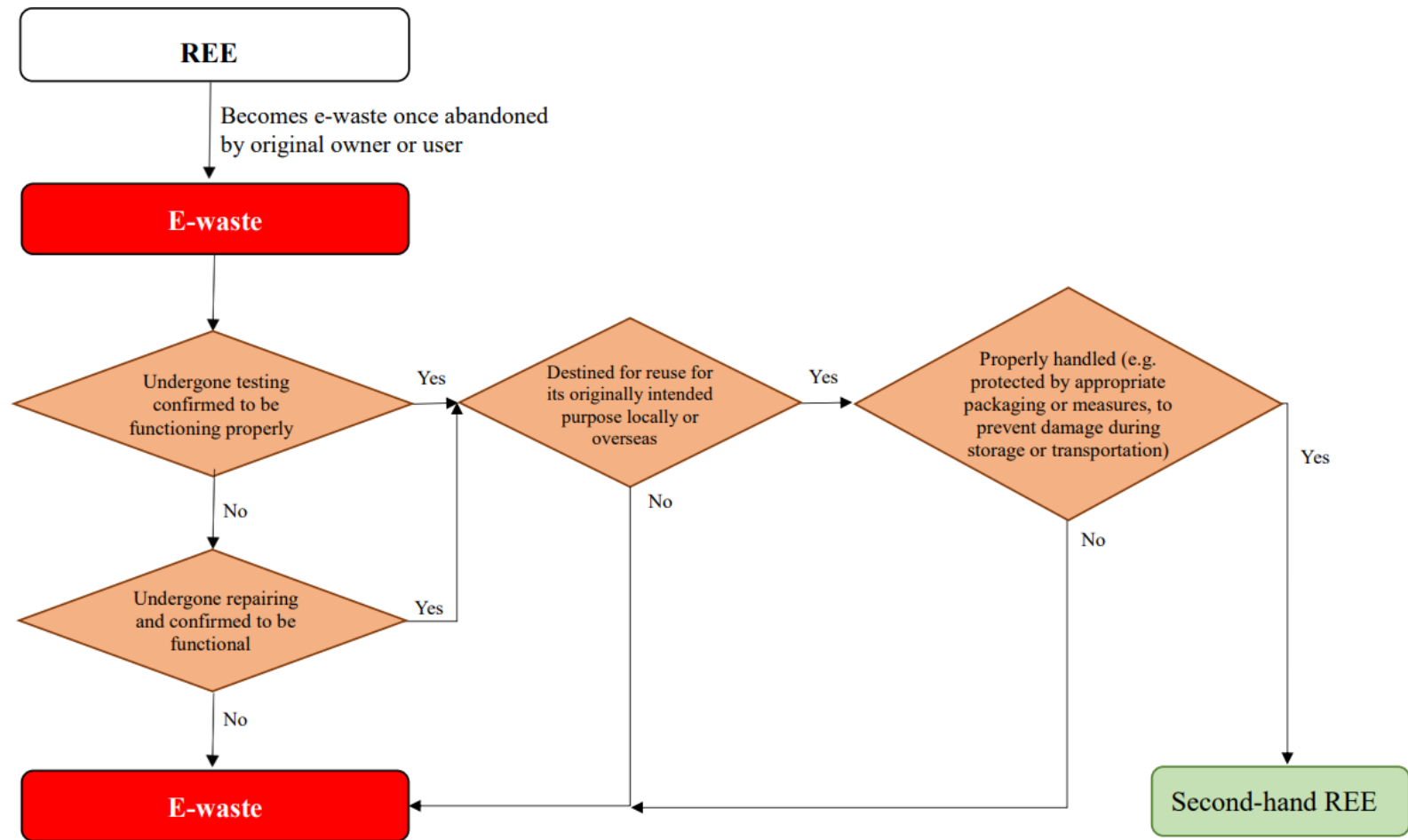
# E-waste Import / Export Control

- ▶ E-waste control covers abandoned air-conditioners, refrigerators, washing machines, televisions, computers, printers, scanners and monitors
- ▶ Import / export permit control effective since 31 December 2018



# E-waste Import / Export Control

- ▶ E-waste that has undergone proper testing / repairing may be classified as “second-hand electrical equipment”
- ▶ Second hand electrical equipment -
  - used for its original intended purpose
  - testing and repair report available
  - proper packaging



# Waste Plastics Import / Export Control



# Waste Plastics Import / Export Control (1)

- ▷ Basel Convention's Plastic Waste Amendments
- ▷ Non-regulated waste plastics (B3011 of Annex IX of the Basel Convention )
- ▷ Regulated waste plastics (all other waste plastics not classified as the above “non-regulated waste plastics”, including Y48 of Annex II, A3210 of Annex VIII of the Basel Convention)
- ▷ Details of control in Hong Kong -  
[https://www.epd.gov.hk/epd/english/environmentinhk/waste/guide\\_ref/guide\\_wiec\\_tcs6.html](https://www.epd.gov.hk/epd/english/environmentinhk/waste/guide_ref/guide_wiec_tcs6.html)

# Waste Plastics Import / Export Control (2)

	Import	Export	Re-export
Regulated waste plastics	<b>Permit Required</b>		<b>Prior declaration to EPD</b>
Non-regulated waste plastics		<b>Prior declaration to EPD</b>	



# Non-regulated waste plastics (1)

- ▶ Types of waste plastics as specified in B3011 of the Basel Convention
- ▶ **Uncontaminated** -  
“**clean** and contain **no more than 0.5% impurities** by weight. Impurities include other types of waste plastics, waste paper, waste glass, etc.”  
(National Standards of the People's Republic of China: GB16487.12-2017)



# Non-regulated waste plastics (2)

- ▶ Recycling in **Environmentally Sound Manner**
  - Thermal treatment for production of recycled plastic pellets
  - Production of new plastic products
  - Chemical recycling
- ▶ Having adequate pollution control in recycling facilities



## Non-regulated waste plastics (3)

- ▶ Prior declaration to EPD before shipment departs from the state of export to prove the shipments comply with the Basel Convention and the WDO
- ▶ Declaration form & supporting documents
  - Bill of Lading or equivalent
  - Photos (e.g. photos of waste plastics, loading photos, photos of recycling facilities)
  - Information on the recycling facilities
  - Contract documents with the recycling facilities

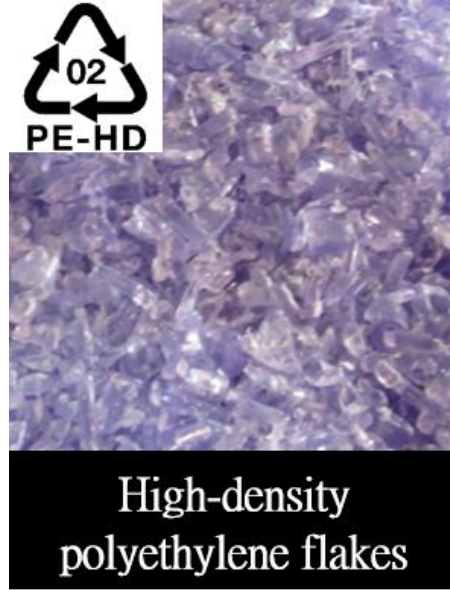
# Non-regulated waste plastics (4)

- ▶ Information and document received to be shared with states concerned
- ▶ Feedback from competent authorities to be passed to concerned importers / exporters
- ▶ Ensure legality and smooth passage of shipment

# Non-regulated waste plastics (5)

- ▶ In 2021 (up to Sept), EPD has processed more than 1,300 prior declarations.

# Non-regulated waste plastics (6)



# Non-regulated waste plastics (7)



# Regulated waste plastics (1)

- ▶ Prior Informed Consent (PIC) procedures to be adopted for communication with overseas Competent Authorities
- ▶ Permit to be issued to importers / exporters if the shipments to be imported into or exported from Hong Kong fulfil WDO's requirements
- ▶ NO permit issued for import / export of “regulated waste plastics” in general
- ▶ NO permit issued for re-export, but declaration is required

## Regulated waste plastics (2)



Contaminated Waste Plastics  
(mixed with impurity exceeding 0.5% by weight)



# Regulated waste plastics (3)



Waste PVC



Contaminated Waste Plastics  
(mixed with impurity exceeding  
0.5% by weight)

# Regulated waste plastics (4)



Electroplated Waste Plastics

# Closing Remarks

# Collaboration with Overseas Competent Authorities

- ▶ To strengthen communication with other Competent Authorities' control over controlled waste ensuring legitimacy and smooth operation of the transboundary movement of controlled waste (including e-waste and plastic waste)
- ▶ To keep concerned trades in Hong Kong informed about other Competent Authorities' control
- ▶ To share intelligence as appropriate

# Contact

For enquiry, please email us:

[wasteimportandexport@epd.gov.hk](mailto:wasteimportandexport@epd.gov.hk)

Thank you